

Photochromic Lenses



Photochromic Lenses

Smart Protection from UV Light

Photochromic lenses feature a special coating of organic and inorganic molecules that react to UV light. When exposed to sunlight, these molecules change shape and darken the lens automatically. As UV exposure disappears, the molecules return to their original form, restoring the lens to full clarity. This adaptive functionality makes photochromic lenses ideal for a comfortable, seamless visual experience throughout the day.

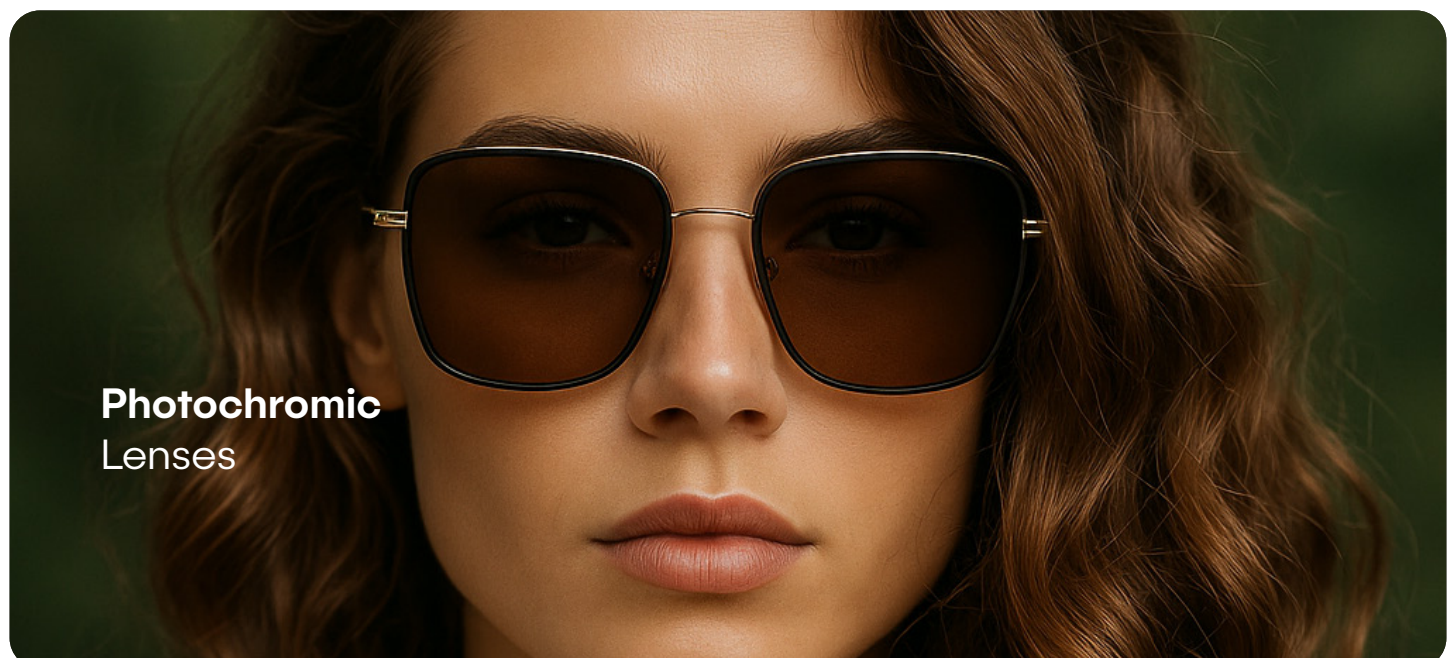
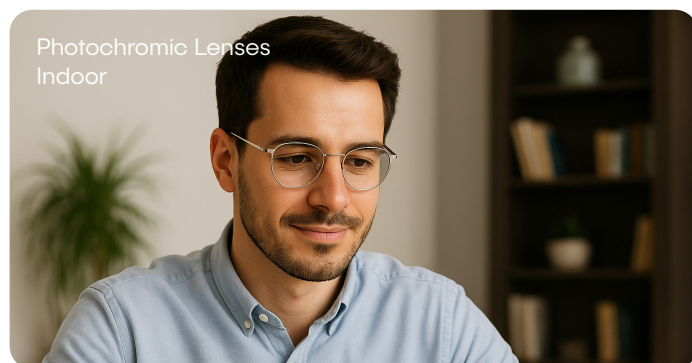
Benefits of iLensify Photochromic Lenses

- ✓ Advanced UV400 protection against harmful blue light and UV rays
- ✓ Reduces digital eye strain and visual stress from screen time
- ✓ Prevents redness and dryness of the eyes
- ✓ Supports circadian rhythm regulation, improving sleep quality
- ✓ Helps protect the retina from long-term damage

How Photochromic Lenses Work

These lenses contain millions of light-sensitive molecules that respond to UV radiation. When outdoors, the molecules activate and darken. Indoors, they revert to their transparent state. This process is:

- Super fast change
- Invisible to the wearer
- Repeated reliably day after day
- iLENSIFY uses cutting-edge photochromic compounds for faster activation and fade-back, ensuring optimal vision in every setting.



Style Meets Function

Choose the tint that matches your lifestyle:

Urban Grey – Sleek, neutral, and professional. **Burnt Brown** – Warm, natural, and relaxed.



Recommended For



- Individuals who frequently transition between indoor and outdoor environments
- Outdoor workers, commuters, and active professionals
- Students and teachers who move between classrooms and open spaces
- Anyone looking for modern, practical, and health-focused eyewear

Why Choose iLensify Photochromic Lenses

- ✓ Thin & lightweight
- ✓ Reduced distortion
- ✓ Natural appearance
- ✓ UV protection (SHMC)

Lens Availability & Customization

iLENSIFY Photochromic lenses are available in a wide range of diameters and prescriptions to fit most frames and visual needs.

-  **Urban Grey**
Sleek, neutral, and professional
-  **Burnt Brown**
Warm, natural, and relaxed





ILENSIFY

71-75 Shelton Street, Covent Garden, London,
WC2H 9JQ, UNITED KINGDOM

www.ilensify.co.uk

